

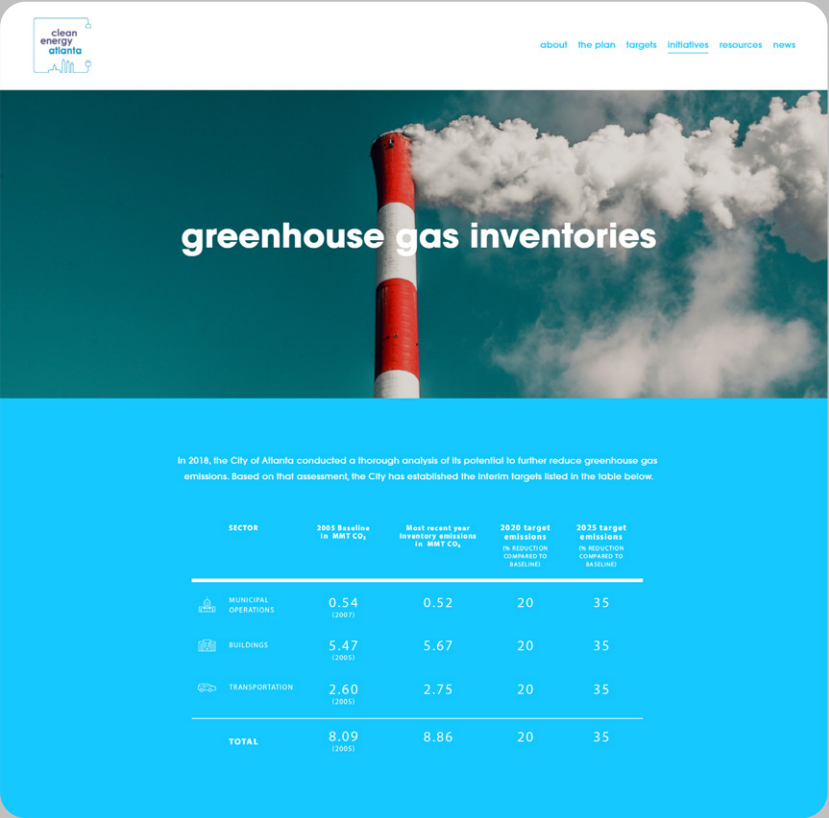
# Alex Quinto

## Sample projects: Web and marketing

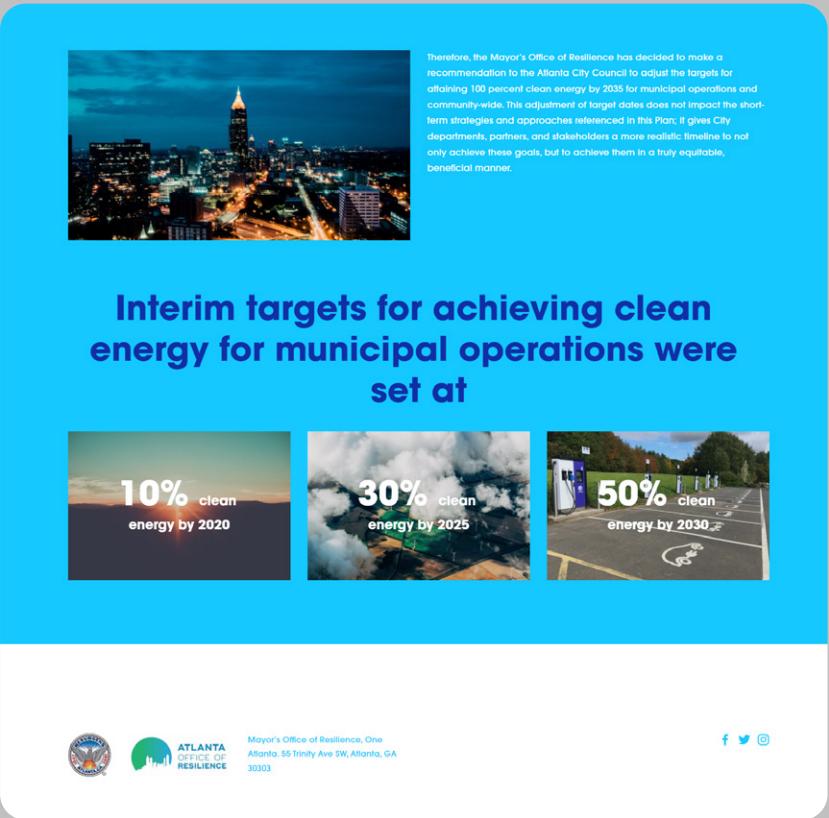
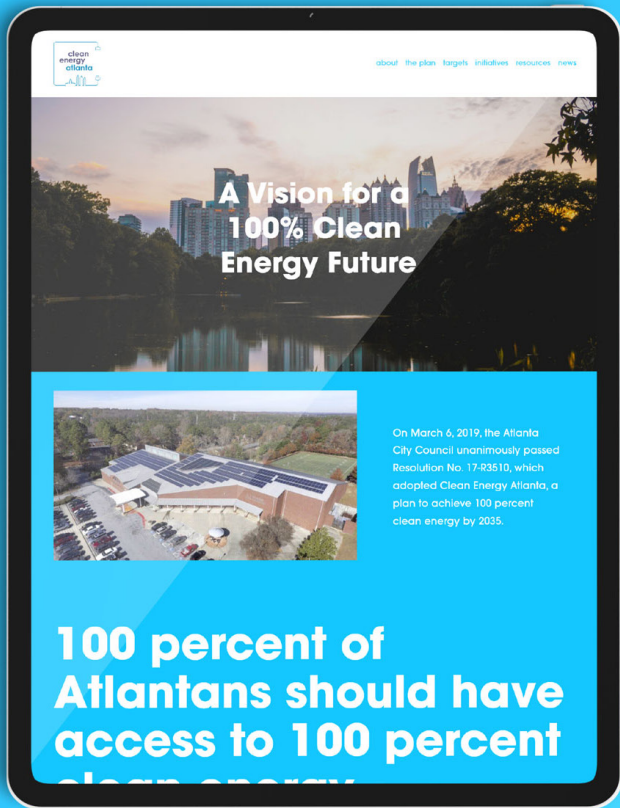
(+52 55) 8335 3697   hola@alexquinto.com   <https://www.linkedin.com/in/alexquinto/>

https://www.100atl.com/

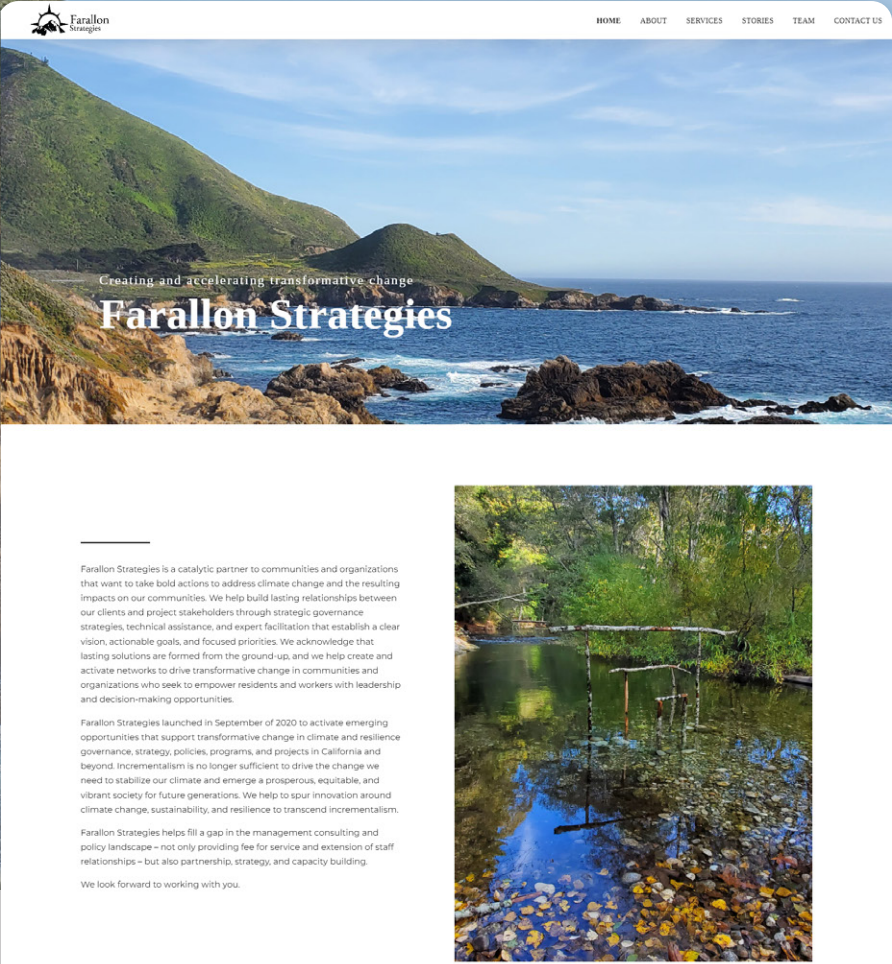
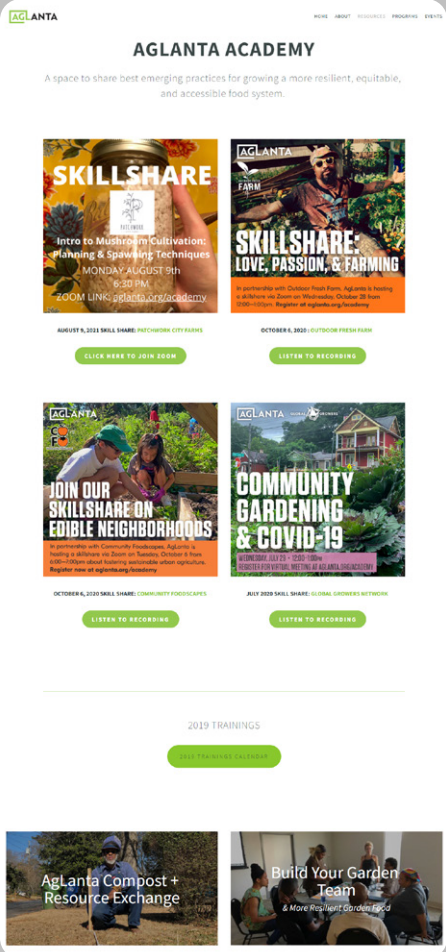
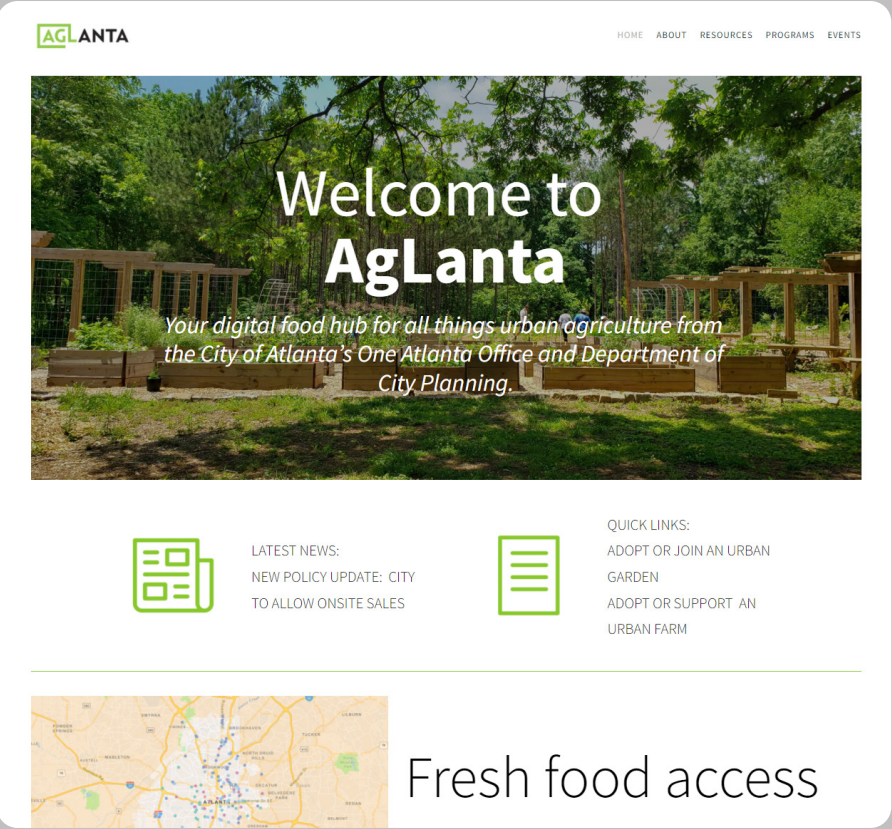
The project began with branding a department of the City of Atlanta. The visual guidelines were then transferred to a new website for the city's program.



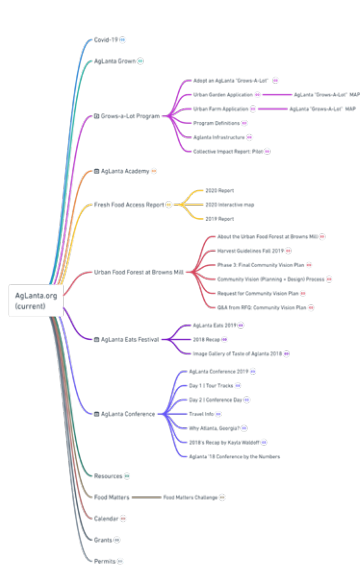
SECTOR	2005 Baseline in MMT CO <sub>2</sub>	Most recent year inventory emissions in MMT CO <sub>2</sub>	2020 target emissions in reduction compared to baseline	2025 target emissions in reduction compared to baseline
MUNICIPAL OPERATIONS	0.54 (2007)	0.52	20	35
BUILDINGS	5.47 (2008)	5.67	20	35
TRANSPORTATION	2.60 (2005)	2.75	20	35
TOTAL	8.09 (2005)	8.86	20	35



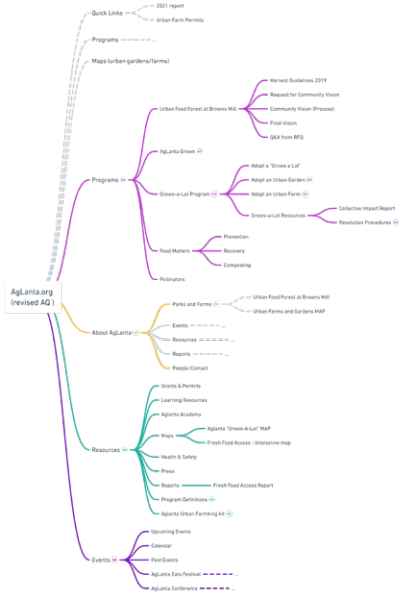




SITEMAP (BEFORE)



SITEMAP (AFTER)





16

Cities released holistic urban resilience strategies with more than 800 initiatives.



17

New partners have joined our global platform.

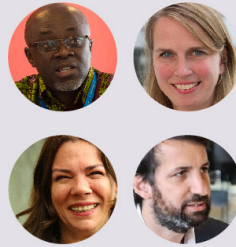


It now has more than 100 nonprofit organizations and companies working with cities to develop and deliver innovative resilience solutions.

24

New Chief Resilience Officers joined our global network.

Today, more than 80 Chief Resilience Officers are leading the urban resilience work in their cities.



1,300

Cities engaged more than 1,300 community groups in the process of developing their urban resilience strategies, from participating in workshops to steering communities.



5,500+

More than 5,500 hours of training completed by CROs and city staff to build on their skills and resilience knowledge.



Around the world, the need for urban resilience has never been greater:

More than 50% of the world's population lives in cities

More than 60% of the world's 21.3 million refugees live in urban areas

Hundreds of city leaders affirmed their commitments to the goals of the Paris climate agreement



## California Resilience Partnership

[rcc.city/california](http://rcc.city/california)

Resilient Cities Catalyst Launches California Resilience Partnership: A New Statewide, Collaborative, Multi-Sector Effort with the Conrad N. Hilton Foundation

California's regions are tackling unprecedented, urgent, and compounding resilience challenges, linked by common drivers including climate change, the COVID-19 pandemic, racial injustice, and economic forces. The California Resilience Partnership (CRP) is a multimillion-dollar public-philanthropic effort in coordination with a diverse set of organizations and stakeholders, along with participation by representatives of California State agencies, to support collaboration on statewide priorities. RCC will be scaling the model piloted in greater Los Angeles and greater San Diego to other regions across the state.

Learn more in our announcement

PRESS RELEASE

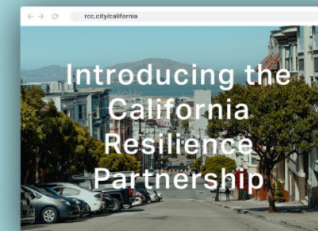
CRP partners include Climate Resolve, the San Diego Regional Climate Collaborative, the Alliance of Regional Collaboratives for Climate Adaptation, the Institute for Local Government, the Local Government Commission, the Greenlining Institute, and the Nonprofit Institute. [Hear from our partners about today's launch](#)



The CRP is a new model designed to attract philanthropic and other funders for high-impact resilience projects. CRP aims to secure at least \$30 million from public, private, and philanthropic sources over the next five years to help scale to regions across the state. To date, the [Conrad N. Hilton Foundation](#) has committed nearly \$3 million in grant support for the CRP and complementary projects, along with additional support from [Alumna Innovations Foundation](#), [The San Diego Foundation](#), and Builders Initiative. In addition, a project emerging from CRP pilot work recently secured funding from the [California Ocean Protection Council](#).

[Visit our site to learn more.](#)

[rcc.city/california](http://rcc.city/california)



### PARTNERS



## California Resilience Partnership

[rcc.city/california](http://rcc.city/california)



"The **California Resilience Partnership** is the next step forward in advancing a bold effort to establish the state as a leader in the resilience movement"



**Marc Holley**  
VICE PRESIDENT OF  
STRATEGY AND PROGRAMS,  
CONRAD N. HILTON FOUNDATION

"Rooted in our experience working alongside Los Angeles and San Diego communities on climate resilience projects, we see the potential to scale our city and regional experiences in California and elsewhere to a statewide approach."



**Sam Carter**  
FOUNDING PRINCIPAL,  
RESILIENT CITIES CATALYST



### WHAT DID WE HEAR FROM STAKEHOLDERS?

"Workforce development should be a priority. This would help build a sustainable pipeline of climate and health professionals. Explore paid opportunities for interns and fellows in partnership with CBOs, governmental entities, and academia."



The County's forthcoming Climate Change and Health Equity report will include **concrete goals and strategies** aimed at fostering healthier and more climate resilient communities across the region.



84

**84 Chief Resilience Officers (CROs)** have been hired or appointed by city leaders to lead their cities' resilience efforts.

40

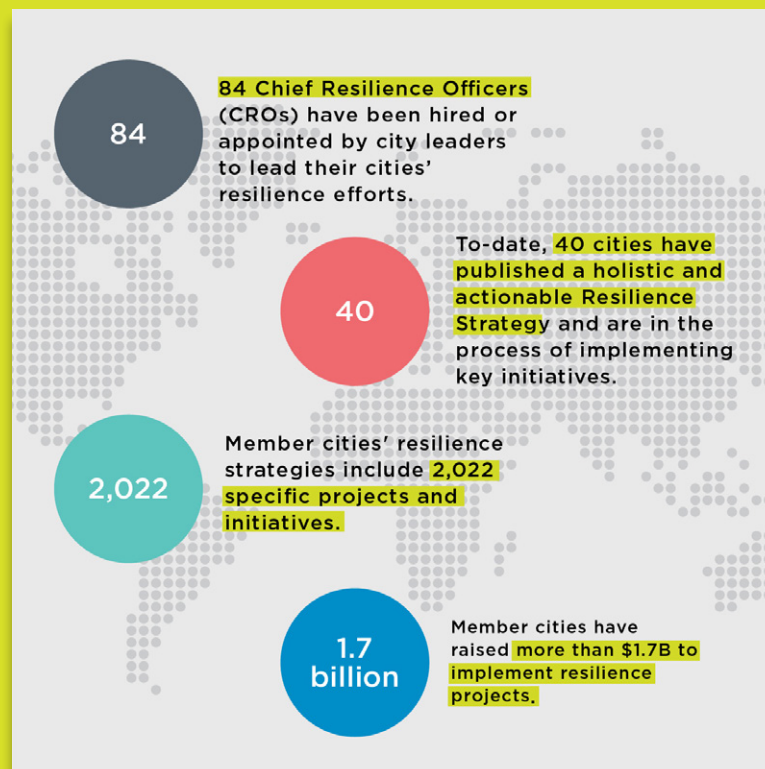
To-date, **40 cities** have published a holistic and actionable Resilience Strategy and are in the process of implementing key initiatives.

2,022

Member cities' resilience strategies include **2,022 specific projects and initiatives.**

1.7 billion

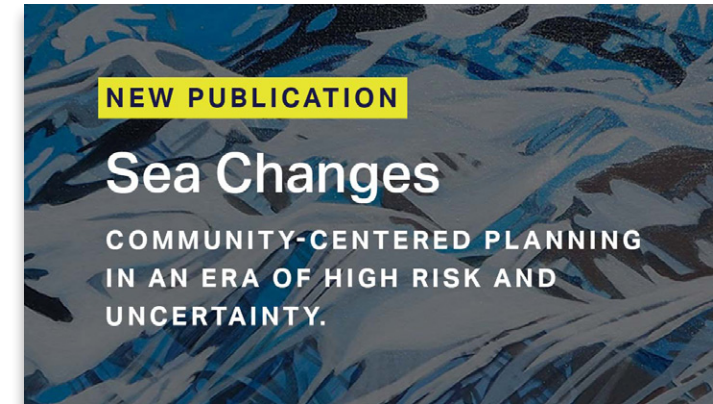
Member cities have raised **more than \$1.7B** to implement resilience projects.



### NEW PUBLICATION

## Sea Changes

COMMUNITY-CENTERED PLANNING  
IN AN ERA OF HIGH RISK AND  
UNCERTAINTY.



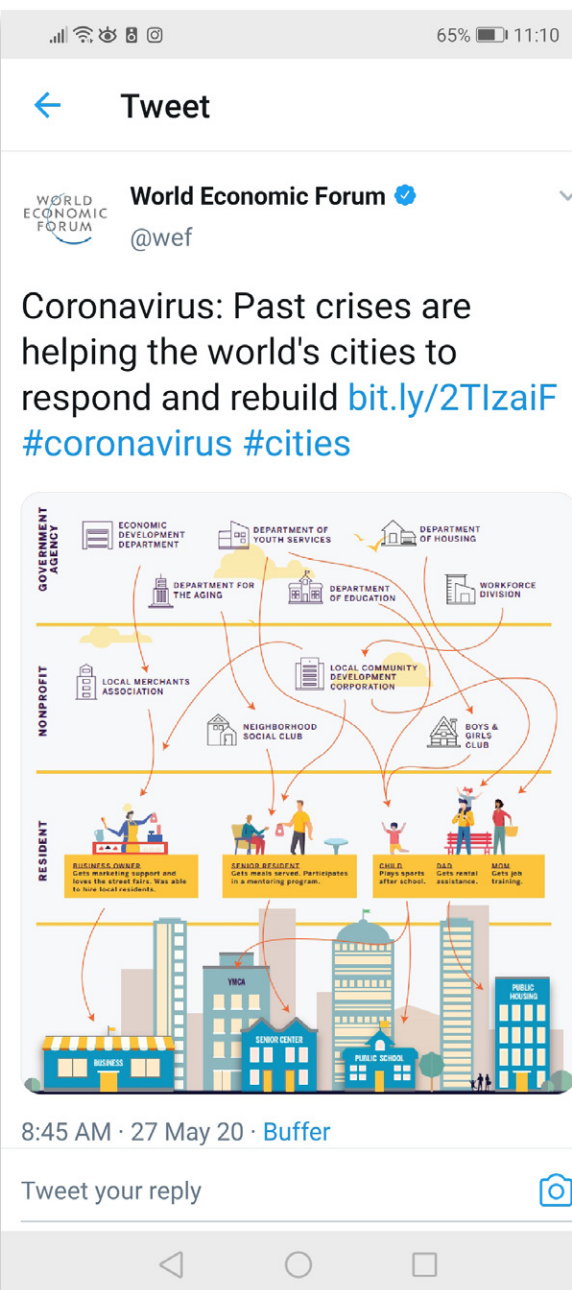
"The goal is to be able to understand where the strategic advantages are for all of the different subregions of Upper Appalachia and the Ohio Valley, and recognizing how we should be working to help each other instead of competing against each other."



**BILL PEDUTO**  
MAYOR OF PITTSBURGH



The design of Northwest Resiliency Park which resulted from several years of iterative community planning is a good balance between nature, culture and sports



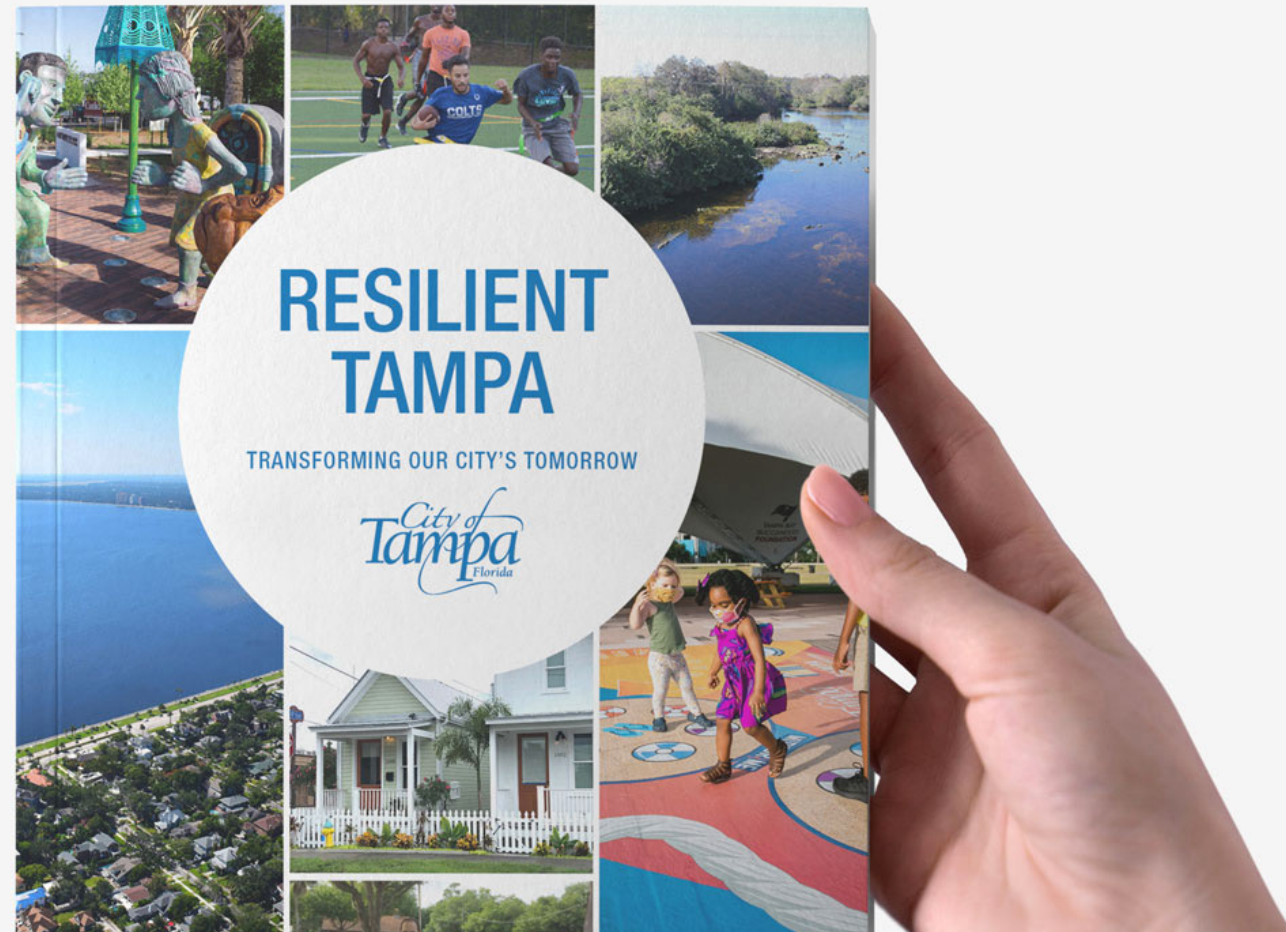
"We felt that partnering with the cities included in the Marshall Plan was important because communities in the Ohio Valley are wrestling with energy transition as an existential challenge. It is critical to have local partners own and drive the work to create meaningful outcomes for their communities."



**ANDREW SALKIN**  
FOUNDING PRINCIPAL,  
RESILIENT CITIES CATALYST







In 2021, the City of Tampa, FL released the city's resilience roadmap. I designed the document, including infographics and social media toolkit that were used during the launch event and on the city's website.





I currently maintain the website for Resilient Cities Catalyst. This includes adding new content, creating custom graphics, and adding custom CSS/JS code when needed.

