An illustration of two people in a gallery setting. On the left, a person with dark curly hair is seen from the back, wearing a purple long-sleeved shirt. On the right, a woman with dark curly hair is smiling, wearing a light purple long-sleeved shirt. They are standing in front of a large blue rectangular artwork. The background features a warm, abstract pattern in shades of orange and yellow, resembling a map or a textured wall. The overall style is modern and colorful.

# DESIGN PORT- FOLIO

**Alejandro Quinto**

Visual communication for mission-driven organizations

Online

<https://alexquinto.com>

Phone

(+52 55) 8335 3697

Email

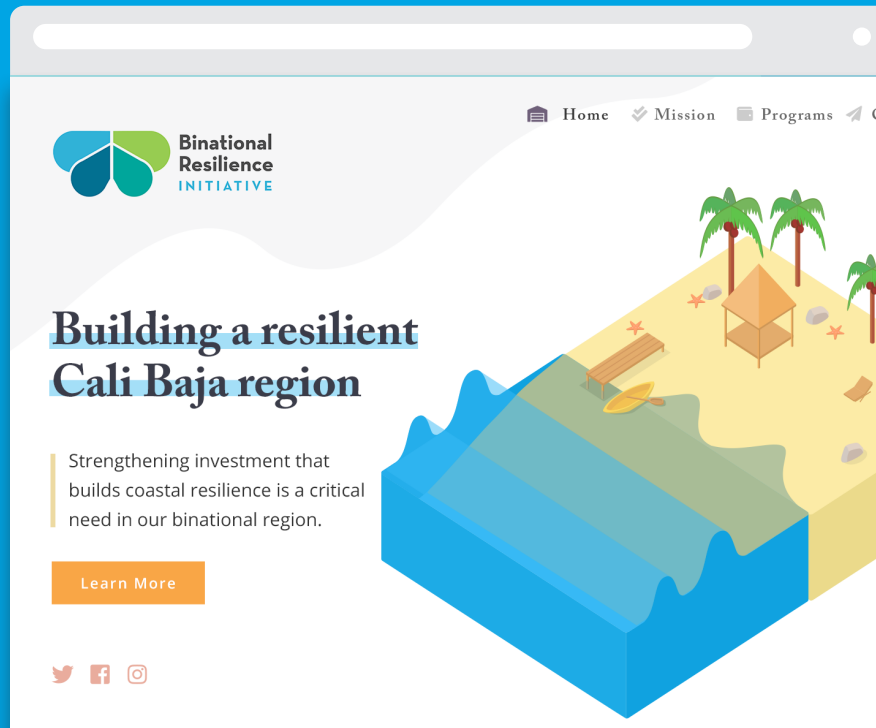
[helloalexquinto@gmail.com](mailto:helloalexquinto@gmail.com)

[hola@alexquinto.com](mailto:hola@alexquinto.com)

## BRANDING

**BINATIONAL RESILIENCE INITIATIVE —**  
Visual identity for a binational program  
led by the San Diego Foundation and the  
International Community Foundation.

[VIEW PROJECT](#)



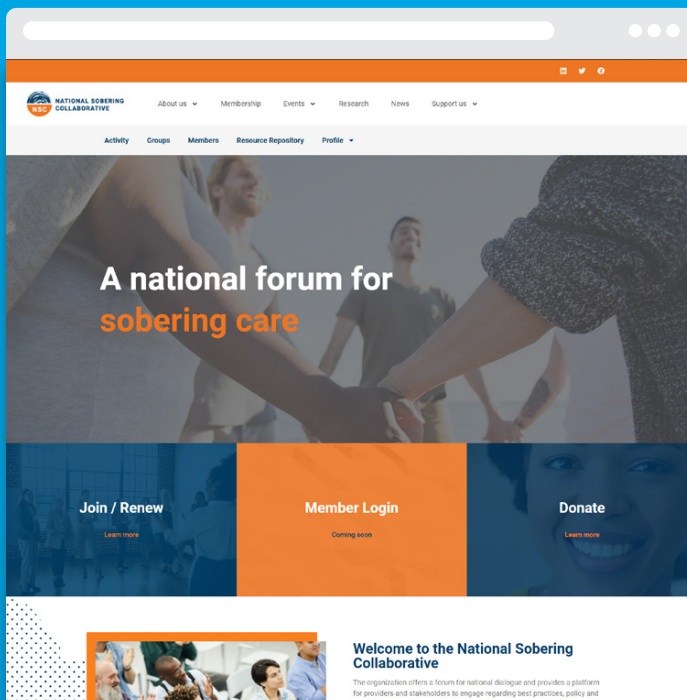
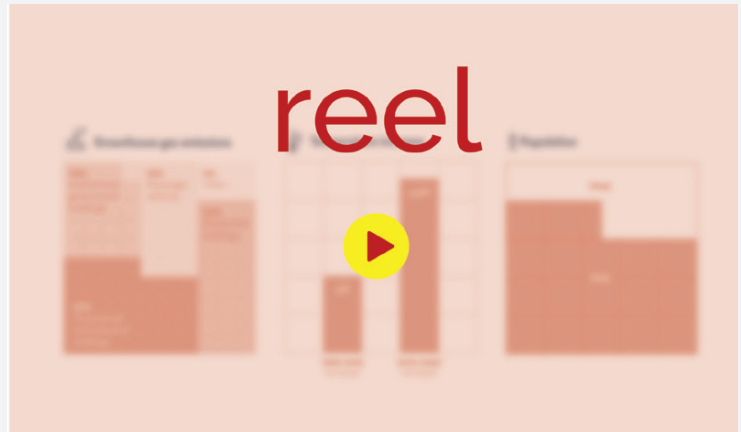
**CITY OF ATLANTA —** Visual identity for the  
city's Clean Energy program.



## MOTION

**REEL** — In this 1.20 minute reel, you can see some key projects in various areas: animation, infographics, branding, information design and motion graphics.

[WATCH THE VIDEO](#)



## UI/WEB DESIGN, CONTENT MANAGEMENT

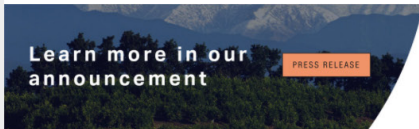
**NATIONAL SOBERING COLLABORATIVE** — Website creation and content management for this North American organization built with Wordpress.

[GO TO WEBSITE](#)

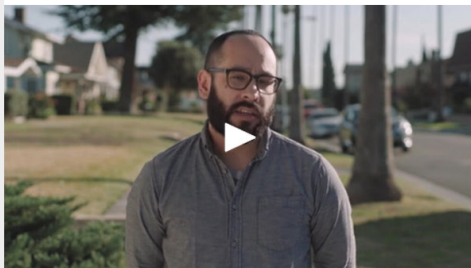


Resilient Cities Catalyst Launches California Resilience Partnership: A New Statewide, Collaborative, Multi-Sector Effort with the Conrad N. Hilton Foundation

California's regions are tackling unprecedented, urgent, and compounding resilience challenges, linked by common drivers including climate change, the COVID-19 pandemic, racial injustice, and economic forces. The California Resilience Partnership (CRP) is a multimillion-dollar public-philanthropic effort in coordination with a diverse set of organizations and stakeholders, along with participation by representatives of California State agencies, to support collaboration on statewide priorities. RCC will be scaling the model piloted in greater Los Angeles and greater San Diego to other regions across the state.



CRP partners include Climate Resolve, the San Diego Regional Climate Collaborative, the Alliance of Regional Collaboratives for Climate Adaptation, the Institute for Local Government, the Local Government Commission, the Greenlining Institute, and the Nonprofit Institute. [Hear from our partners about today's launch](#)



The CRP is a new model designed to attract philanthropic and other funders for high-impact resilience projects. CRP aims to secure at least \$30 million from public, private, and philanthropic sources over the next five years to help scale to regions across the state. To date, the [Conrad N. Hilton Foundation](#) has committed nearly \$3 million in grant support for the CRP and complementary projects, along with additional support from [Alumna Innovations Foundation](#), [The San Diego Foundation](#), and Builders Initiative. In addition, a project emerging from CRP pilot work recently secured funding from the [California Ocean Protection Council](#).

[Visit our site to learn more.](#)

rcc.city/california



#### PARTNERS



## INBOUND MARKETING

Sample graphics of a newsletter and social media campaign for Resilient Cities Catalyst.

### California Resilience Partnership

rcc.city/california



"The **California Resilience Partnership** is the next step forward in advancing a bold effort to establish the state as a leader in the resilience movement"



**Marc Holley**  
VICE PRESIDENT OF  
STRATEGY AND PROGRAMS,  
CONRAD N. HILTON FOUNDATION

"Rooted in our experience working alongside Los Angeles and San Diego communities on climate resilience projects, we see the potential to scale our city and regional experiences in California and elsewhere to a statewide approach."



**Sam Carter**  
FOUNDING PRINCIPAL,  
RESILIENT CITIES CATALYST



## REPORTS, BOOKLETS AND INFOGRAPHICS

### Shocks and Stresses Driven by Inequities

#### FOOD INSECURITY & AGRICULTURE

While agriculture is responsible for \$1.8 billion in sales, 25% of census tracts across the county are considered food deserts, with limited access to healthy and affordable food.<sup>12</sup>



#### HOMELESSNESS

Partially driven by housing affordability pressures, the number of San Diegans experiencing homelessness is increasing. Last year, over 8,400 individuals were unhoused.<sup>13</sup>



#### HOUSING ACCESS & AFFORDABILITY

Like the rest of California and many other urban areas across the country, affordability poses a growing stress to families across the region. While a significant portion of the affordability crisis is driven by housing costs—and San Diego has the highest median home prices in the nation—high transportation and other costs contribute to these pressures among the highest median home prices in the nation. A recent study found that 34 percent of homeowners and 57 percent of renters in the region were cost burdened, meaning that housing costs accounted for over 30 percent of their income.<sup>14</sup>

57% of renters are cost burdened



#### LACK OF OR DISPARITIES IN ACCESS TO OPEN SPACE

Access to a park within a 10-minute walk varies substantially by neighborhood and by jurisdiction across the region. While 93% of residents in San Del Mar and 81% of residents in San Diego are within a 10-minute walk of a park, this figure stands at 51% and 56%, respectively, for residents in the cities of Vista and Carlsbad.<sup>15</sup>



#### STRUCTURAL RACISM

An abundance of indicators illustrate the lingering impacts of centuries of structural racism. The Climate Safe Neighborhoods (CSN) partnership traces racist practices, such as redlining, to a variety of disparities that persist today in communities of color compared to other neighborhoods, across income, environmental hazards, investment in infrastructure, and vulnerability to heat and flooding.<sup>16</sup>



#### POVERTY & ECONOMIC INEQUALITY

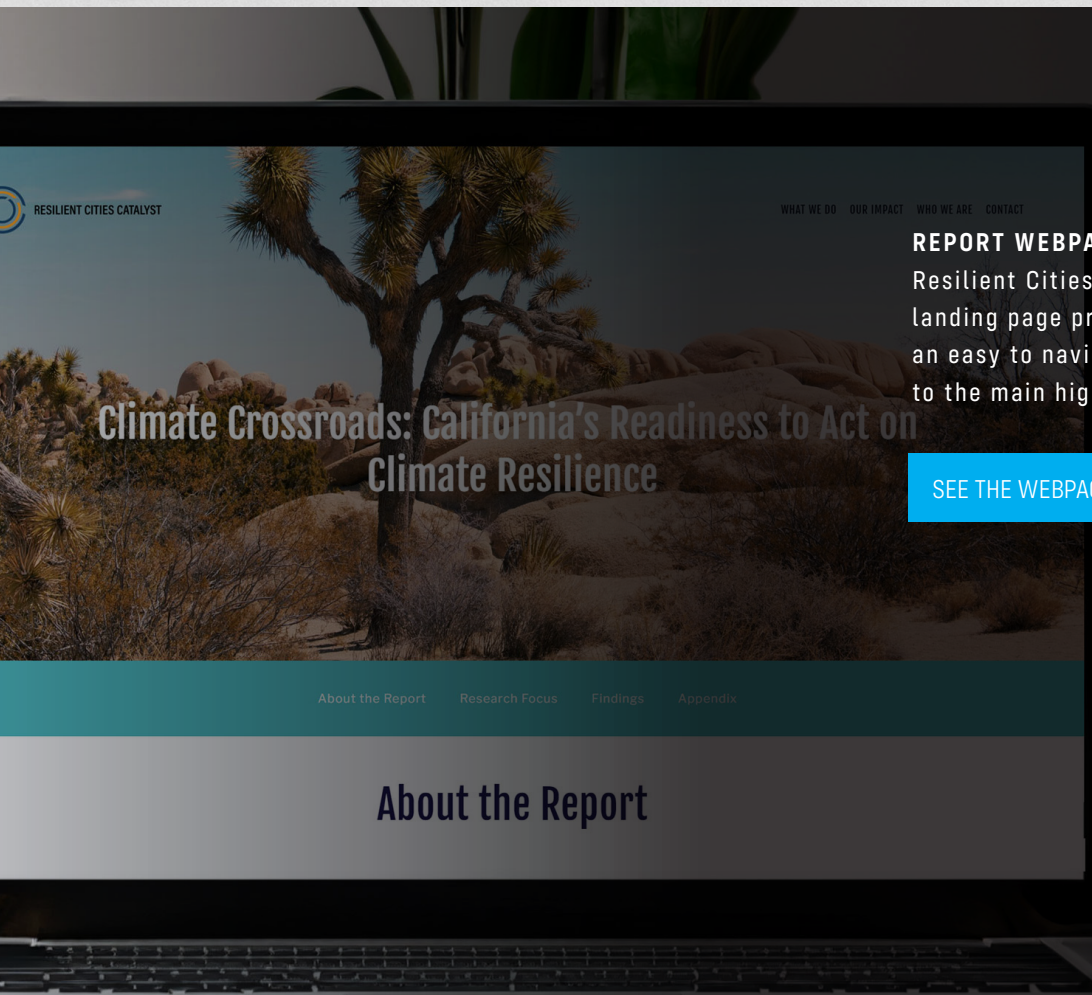
Entrenched economic inequality, largely the result of racist practices and decades of underinvestment particularly in communities of color, is exemplified by neighborhood level economic disparities. A study comparing San Diego Promise Zone (SDPZ) neighborhoods (spanning Barrio Logan to Encanto) to surrounding neighborhoods found that the annual median income in the SDPZ was nearly half that of the County, while an average of 82% of residents live in poverty—a rate that is almost double the City's average of 42%.<sup>17</sup>

8,000+ unhoused individuals

## SAN DIEGO REGION COASTAL RESILIENCE ROADMAP

**DIGITAL AND PRINT PUBLICATION** — Designed in collaboration with the San Diego Regional Climate Collaborative and Resilient Cities Catalyst, this publication uses several custom illustrations to explain complex social and environmental challenges.

[SEE THE PUBLICATION](#)



**REPORT WEBPAGE** — In partnership with Resilient Cities Catalyst, this publication's landing page presents this 300+ page report in an easy to navigate webpage with quick access to the main highlights and sections of the report.

[SEE THE WEBPAGE](#)

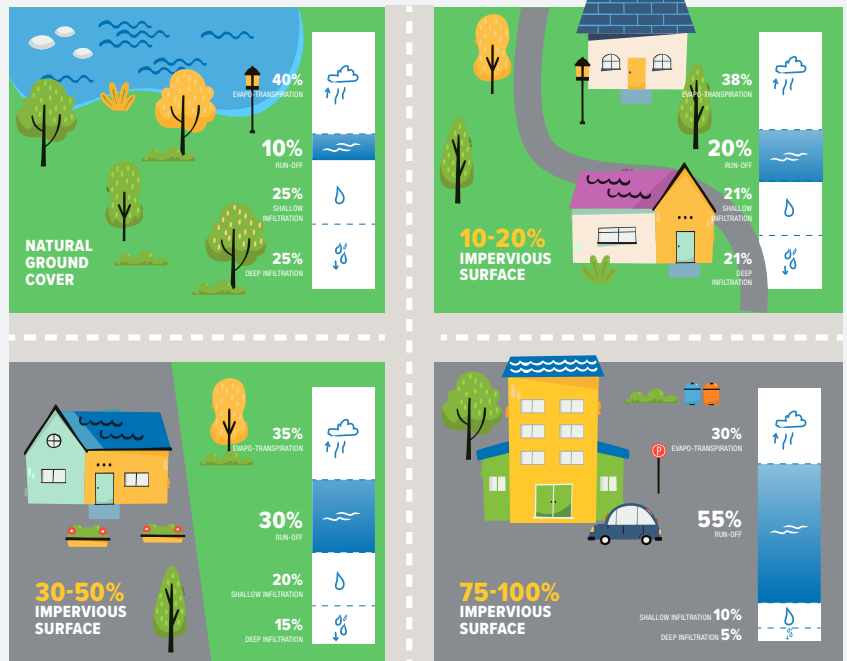
## ILLUSTRATION

Various illustrations created for the City of Tampa.

[SEE THE REPORT](#)

### WHERE DOES THE WATER GO?

When it rains, ground surface determines where water is stored.



**BOYLE HEIGHTS ARTS CONSERVATORY —**  
Set of illustrations created for this  
Los Angeles-based organization.

[GO TO PUBLICATION](#)



## About

Alex Quinto

---

I support mission-driven organizations through visual communication services, helping them communicate visually complex topics through various visual outputs: publications, website and social media communications, videos, animations, and infographics.

I studied design and interactive media at the Minneapolis College of Art and Design (BFA) and studied a postgraduate design degree at the Institute without Boundaries, hosted by the internationally-acclaimed Bruce Mau Design studio in Toronto, Canadá. I currently live in Mexico City.

Current and recent clients include:

Resilient Cities Catalyst  
Natural Resources Defense Council  
Resilient Cities Network  
Bloomberg Philanthropy  
Global Institute on Innovation Districts  
Rockefeller Foundation / 100 Resilient Cities program  
Chronicle Books  
Princeton Architectural Press

More project samples available upon request